

Table 1.**Out-of-State Driver's Licenses Surrendered By State, District of Columbia and Non-States, Ranked By Annual Total, 2007, 2008***

STATE	Year		Rank		Annual Change		Percent of Total	
	2008	2007	2008	2007	Amount	Percent	2008	2007
California	104,543	105,402	1	1	-859	-0.8%	23.4%	24.1%
Texas	24,605	23,791	2	2	814	3.4%	5.5%	5.4%
Illinois	22,823	22,837	3	3	-14	-0.1%	5.1%	5.2%
Michigan	18,873	17,420	4	6	1,453	8.3%	4.2%	4.0%
Washington	18,783	17,638	5	5	1,145	6.5%	4.2%	4.0%
Colorado	18,614	17,873	6	4	741	4.1%	4.2%	4.1%
Florida	16,427	15,706	7	7	721	4.6%	3.7%	3.6%
Nevada	14,450	14,227	8	9	223	1.6%	3.2%	3.3%
New York	14,439	14,888	9	8	-449	-3.0%	3.2%	3.4%
New Mexico	13,710	13,269	10	10	441	3.3%	3.1%	3.0%
Ohio	12,457	12,105	11	11	352	2.9%	2.8%	2.8%
Oregon	10,739	10,169	12	12	570	5.6%	2.4%	2.3%
Minnesota	9,984	9,661	13	13	323	3.3%	2.2%	2.2%
Utah	9,736	9,294	14	15	442	4.8%	2.2%	2.1%
Pennsylvania	9,520	9,324	15	14	196	2.1%	2.1%	2.1%
Wisconsin	8,852	8,418	16	17	434	5.2%	2.0%	1.9%
Non-US States*	8,551	8,487	17	16	64	0.8%	1.9%	1.9%
Indiana	7,773	7,413	18	18	360	4.9%	1.7%	1.7%
New Jersey	7,009	7,051	19	19	-42	-0.6%	1.6%	1.6%
Missouri	6,743	6,531	20	20	212	3.2%	1.5%	1.5%
Virginia	6,272	6,206	21	21	66	1.1%	1.4%	1.4%
Georgia	5,614	5,110	22	24	504	9.9%	1.3%	1.2%
Iowa	5,457	5,165	23	23	292	5.7%	1.2%	1.2%
Massachusetts	5,311	5,400	24	22	-89	-1.6%	1.2%	1.2%
Kansas	4,895	4,709	25	25	186	3.9%	1.1%	1.1%
North Carolina	4,710	4,324	26	26	386	8.9%	1.1%	1.0%
Idaho	4,177	3,963	27	28	214	5.4%	0.9%	0.9%
Oklahoma	4,158	3,973	28	27	185	4.7%	0.9%	0.9%
Tennessee	4,014	3,760	29	30	254	6.8%	0.9%	0.9%
Nebraska	4,002	3,881	30	29	121	3.1%	0.9%	0.9%
Maryland	3,979	3,757	31	31	222	5.9%	0.9%	0.9%
Connecticut	3,317	3,146	32	32	171	5.4%	0.7%	0.7%
Alaska	2,944	2,826	33	34	118	4.2%	0.7%	0.6%
Montana	2,935	2,938	34	33	-3	-0.1%	0.7%	0.7%
Hawaii	2,538	2,461	35	35	77	3.1%	0.6%	0.6%
South Dakota	2,254	2,138	36	38	116	5.4%	0.5%	0.5%
Wyoming	2,220	2,209	37	37	11	0.5%	0.5%	0.5%
Arkansas	2,201	2,110	38	39	91	4.3%	0.5%	0.5%
Louisiana	2,172	2,220	39	36	-48	-2.2%	0.5%	0.5%
Kentucky	2,147	2,093	40	40	54	2.6%	0.5%	0.5%
South Carolina	2,046	2,018	41	41	28	1.4%	0.5%	0.5%
Alabama	2,029	1,961	42	42	68	3.5%	0.5%	0.4%
New Hampshire	1,781	1,705	43	43	76	4.5%	0.4%	0.4%
North Dakota	1,568	1,568	44	44	0	0.0%	0.4%	0.4%
Maine	1,339	1,266	45	46	73	5.8%	0.3%	0.3%
Mississippi	1,224	1,293	46	45	-69	-5.3%	0.3%	0.3%
Delaware	1,028	1,062	47	47	-34	-3.2%	0.2%	0.2%
Vermont	809	804	48	48	5	0.6%	0.2%	0.2%
Rhode Island	786	751	49	49	35	4.7%	0.2%	0.2%
West Virginia	734	739	50	50	-5	-0.7%	0.2%	0.2%
D. C.	245	247	51	51	-2	-0.8%	0.1%	0.1%
Annual Totals	447,537	437,307			10,230	2.3%	100.0%	100.0%

Note: * Data compiled by state, District of Columbia, and "Non-U.S. States" (areas outside of states and D.C., such as foreign countries or territories).

Source: Arizona Department of Transportation, Motor Vehicle Division

Prepared by: Arizona Department of Commerce, Research Administration, Jan. 6, 2009

Chart 1.

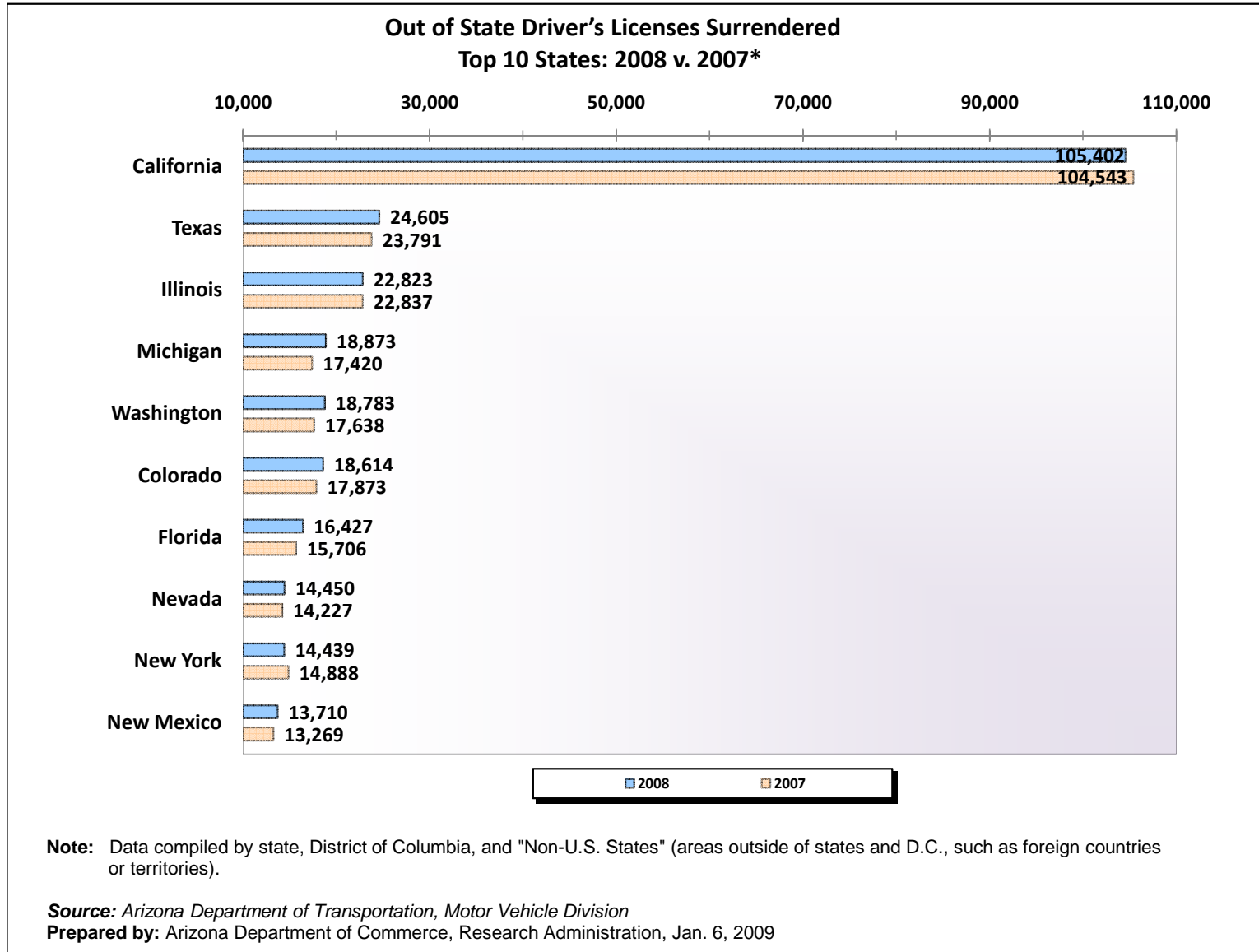
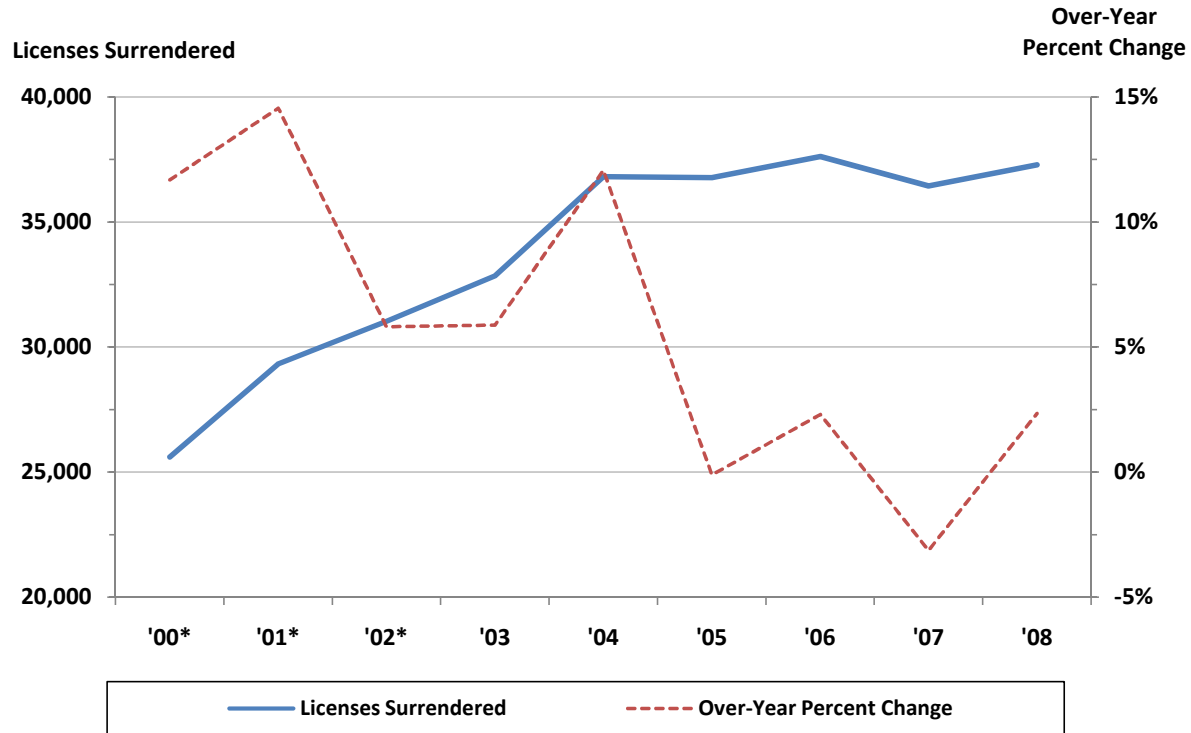


Chart 2.

Out of State Driver's Licenses Surrendered, Average Monthly Total and Annual Pct. Change, 2000-2008



Note: * Data compiled by state, District of Columbia, and "non-states" (areas outside of states and D.C., such as foreign countries or territories). Data collected prior to June 2003 did not include Non-U.S. State data.

Source: Arizona Department of Transportation, Motor Vehicle Division

Prepared by: Arizona Department of Commerce, Research Administration, Jan. 6, 2009