

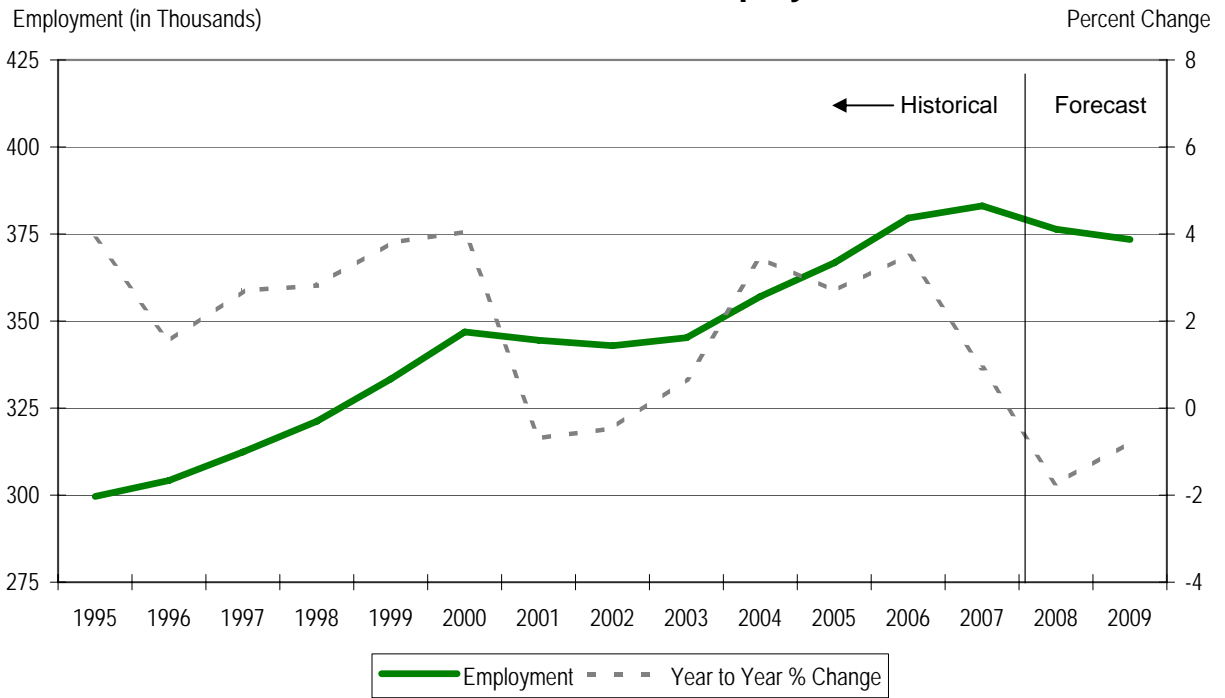
## Tucson MSA Employment Forecast

(In Thousands)

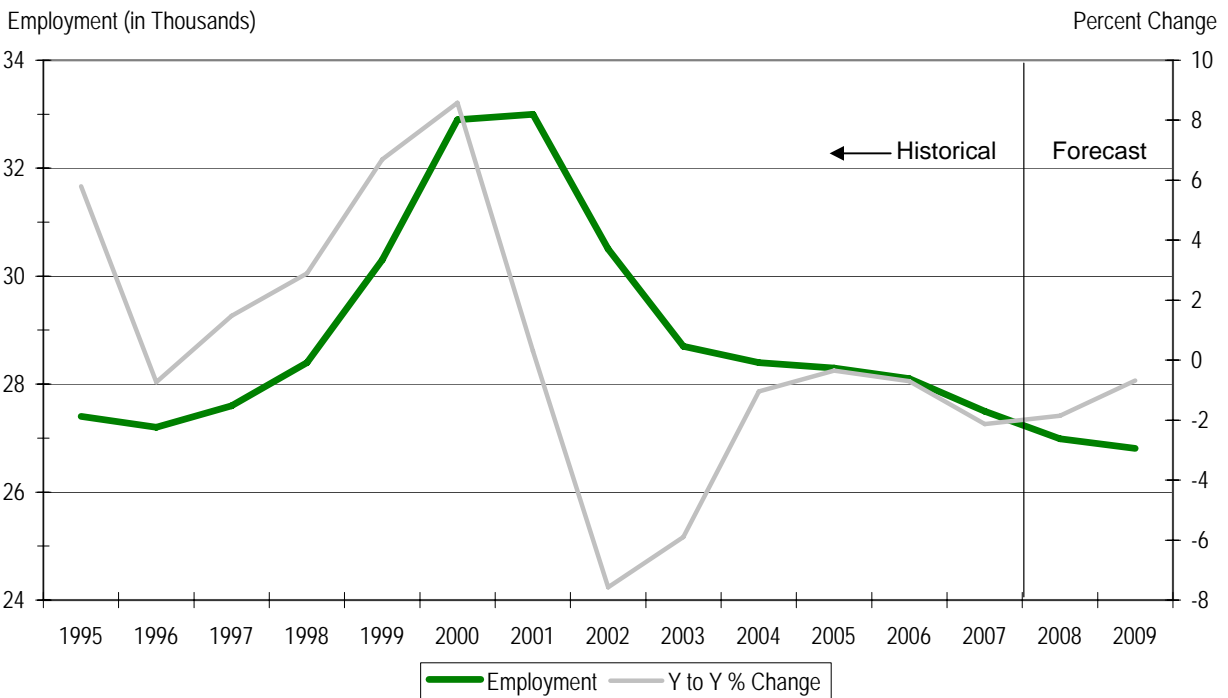
	2005	2006	2007	2008	2009
<b>Total Nonfarm Employment</b>	366.7	379.6	383.1	376.4	373.5
<i>Numerical Change</i>	9.6	12.9	3.5	-6.7	-2.9
<i>Percent Change</i>	2.7%	3.5%	0.9%	-1.7%	-0.8%
<b>Manufacturing</b>	28.3	28.1	27.5	27.0	26.8
<i>Numerical Change</i>	-0.1	-0.2	-0.6	-0.5	-0.2
<i>Percent Change</i>	-0.4%	-0.7%	-2.1%	-1.9%	-0.7%
<b>Natural Resources &amp; Mining</b>	1.4	1.6	1.8	2.1	2.2
<i>Numerical Change</i>	0.1	0.2	0.2	0.3	0.2
<i>Percent Change</i>	7.7%	14.3%	12.5%	14.5%	8.0%
<b>Construction</b>	25.7	27.9	26.4	23.6	22.3
<i>Numerical Change</i>	1.7	2.2	-1.5	-2.8	-1.3
<i>Percent Change</i>	7.1%	8.6%	-5.4%	-10.5%	-5.4%
<b>Trade, Transportation, &amp; Utilities</b>	59.6	62.7	63.9	63.0	62.8
<i>Numerical Change</i>	1.7	3.1	1.2	-0.9	-0.2
<i>Percent Change</i>	2.9%	5.2%	1.9%	-1.4%	-0.4%
<b>Information</b>	7.2	6.8	6.0	5.4	5.2
<i>Numerical Change</i>	-0.4	-0.4	-0.8	-0.6	-0.2
<i>Percent Change</i>	-5.3%	-5.6%	-11.8%	-10.0%	-3.0%
<b>Financial Activities</b>	16.5	17.6	17.8	15.7	14.7
<i>Numerical Change</i>	0.6	1.1	0.2	-2.1	-0.9
<i>Percent Change</i>	3.8%	6.7%	1.1%	-12.0%	-6.0%
<b>Professional &amp; Business Services</b>	45.9	49.7	52.3	51.8	51.4
<i>Numerical Change</i>	2.5	3.8	2.6	-0.5	-0.3
<i>Percent Change</i>	5.8%	8.3%	5.2%	-1.0%	-0.6%
<b>Education &amp; Health Services</b>	50.5	52.6	54.2	54.7	55.2
<i>Numerical Change</i>	2.7	2.1	1.6	0.5	0.5
<i>Percent Change</i>	5.6%	4.2%	3.0%	1.0%	0.8%
<b>Leisure &amp; Hospitality</b>	39.8	40.6	39.8	39.2	38.8
<i>Numerical Change</i>	0.7	0.8	-0.8	-0.6	-0.3
<i>Percent Change</i>	1.8%	2.0%	-2.0%	-1.6%	-0.9%
<b>Other Services</b>	14.7	15.8	15.5	14.7	14.4
<i>Numerical Change</i>	0.0	1.1	-0.3	-0.8	-0.3
<i>Percent Change</i>	0.0%	7.5%	-1.9%	-5.0%	-2.0%
<b>Government</b>	77.1	76.3	77.9	79.3	79.5
<i>Numerical Change</i>	0.2	-0.8	1.6	1.4	0.2
<i>Percent Change</i>	0.3%	-1.0%	2.1%	1.8%	0.2%

Note - All calculations are based on actual figures and then rounded to the nearest tenth for percentage change or the nearest hundred for employment.

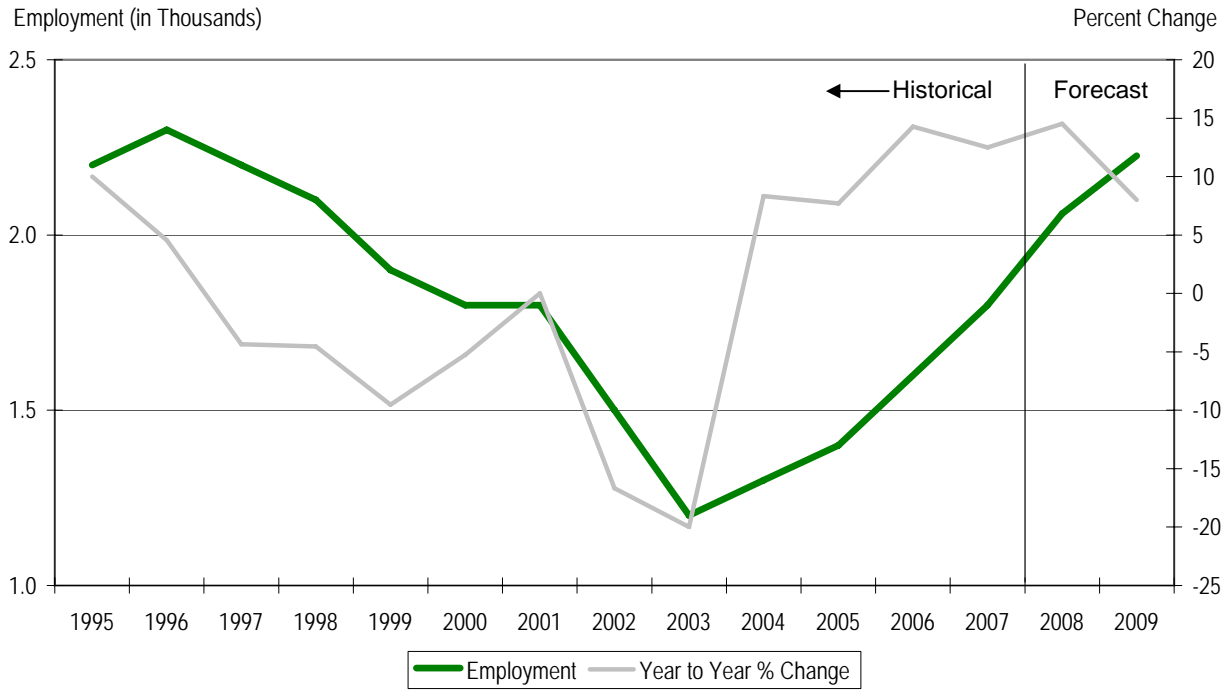
## Tucson MSA Nonfarm Employment



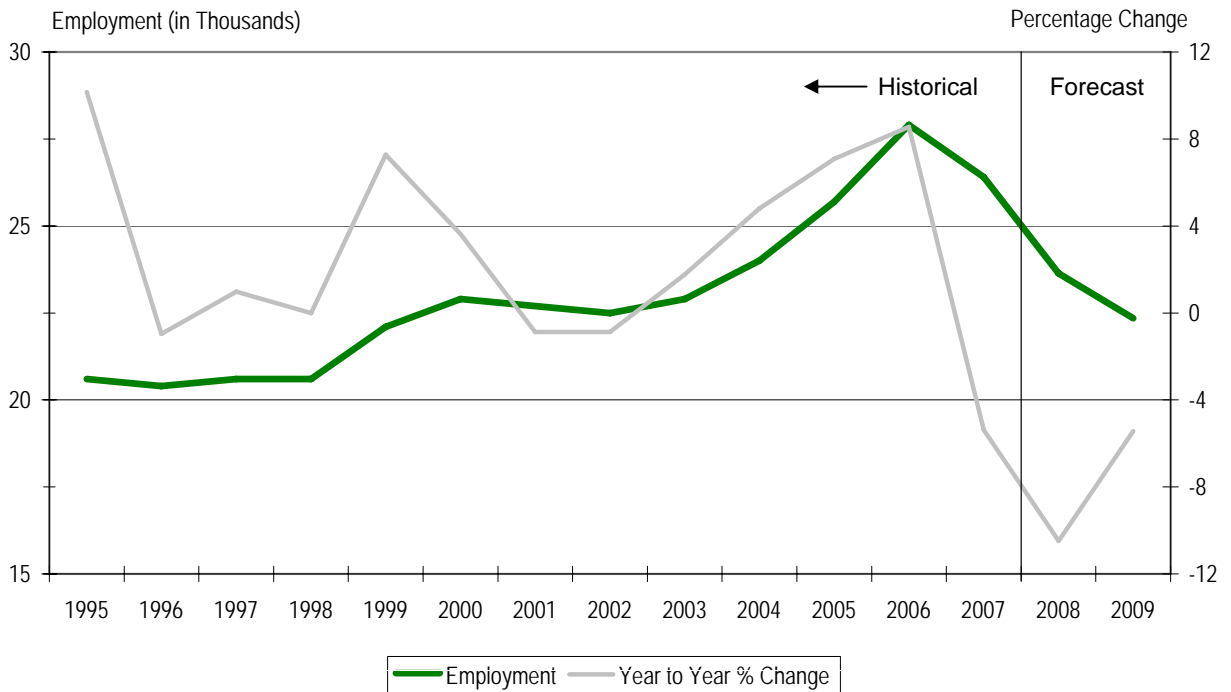
## Tucson MSA Manufacturing Employment



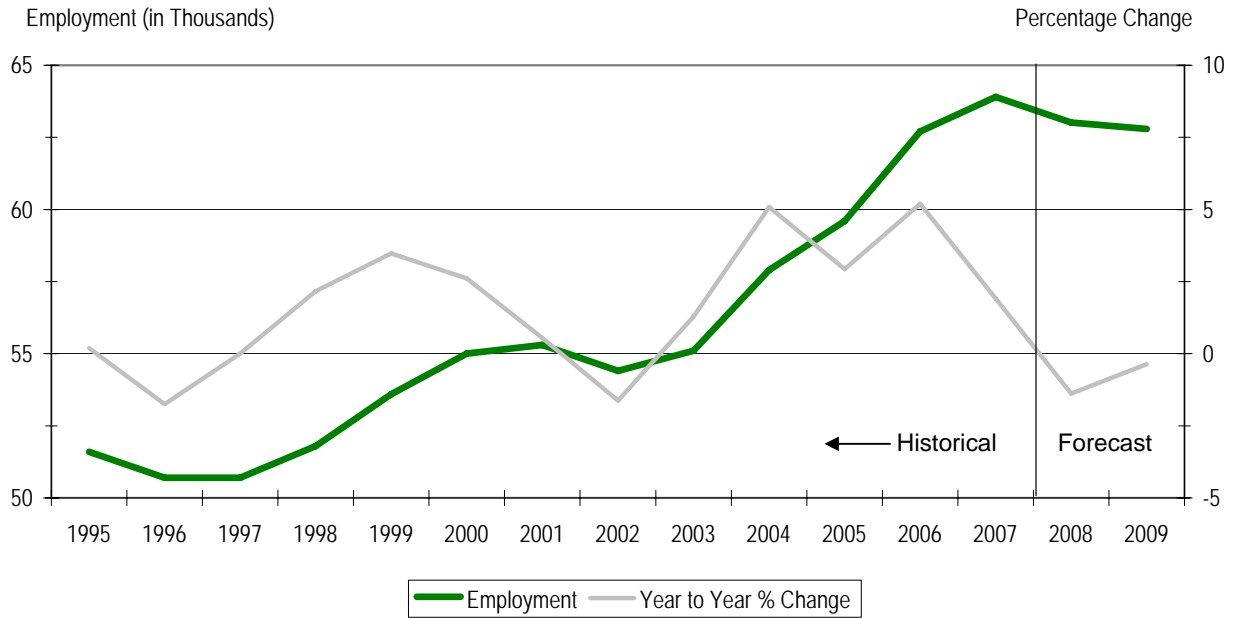
## Tucson MSA Natural Resources & Mining Employment



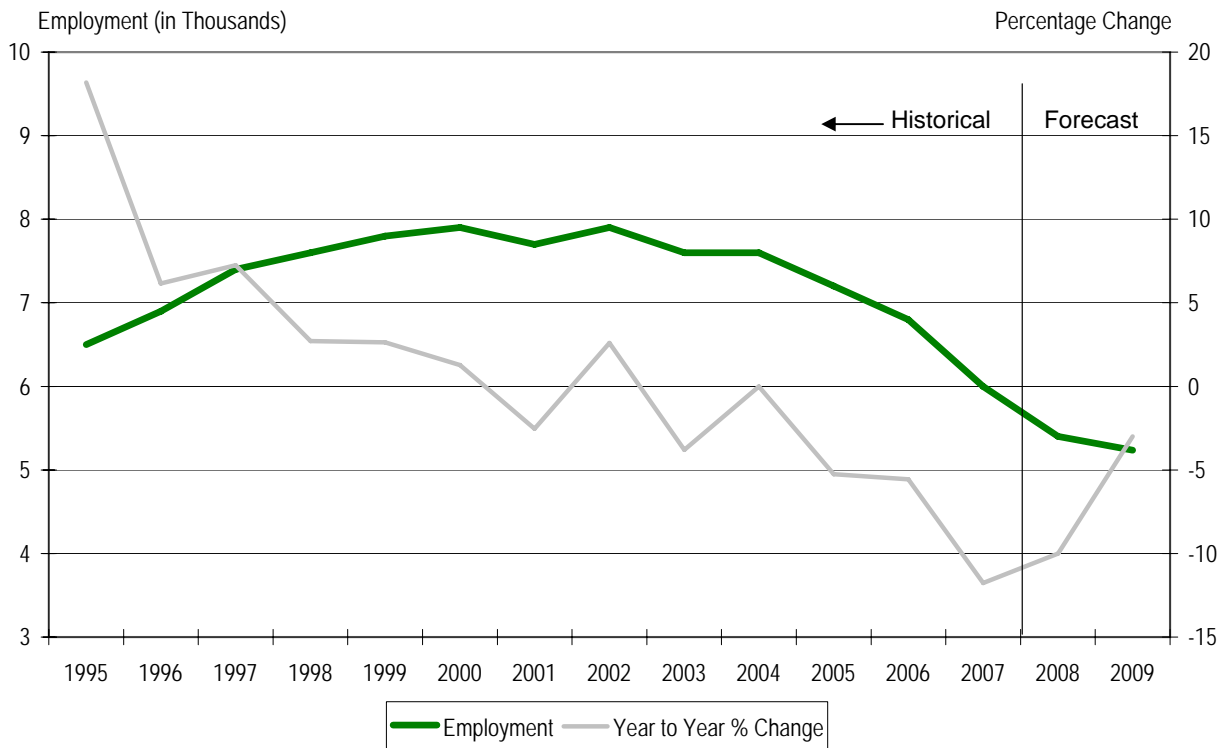
## Tucson MSA Construction Employment



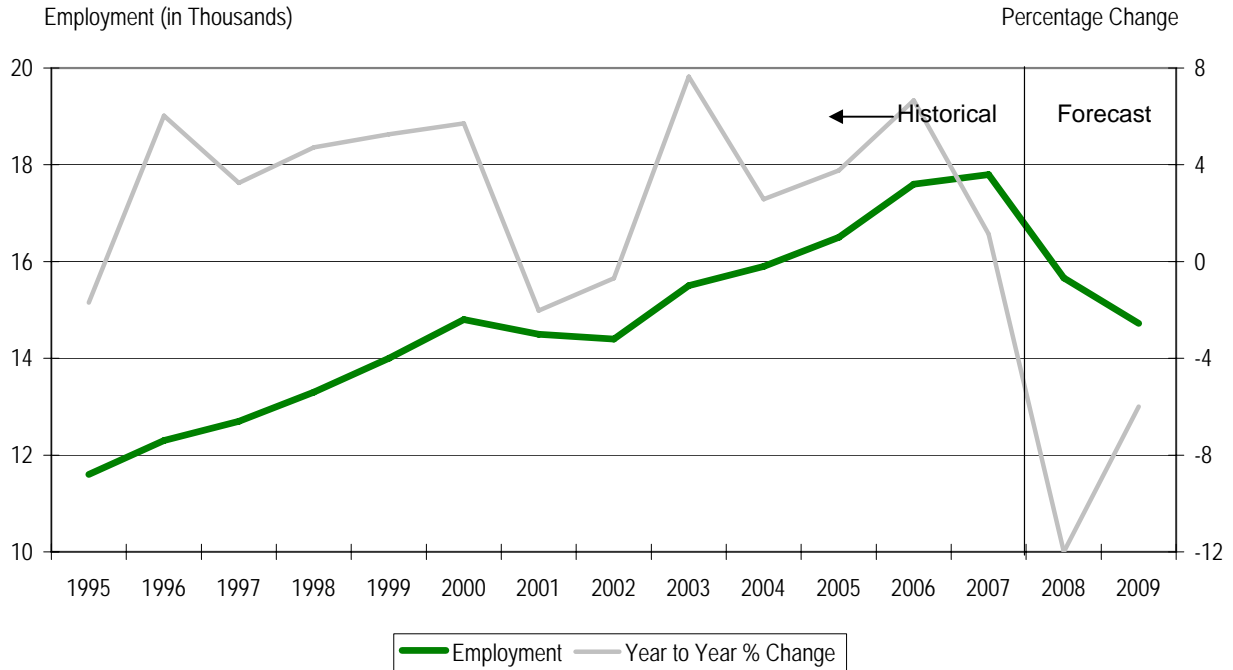
## Tucson MSA Trade, Transportation, and Utilities Employment



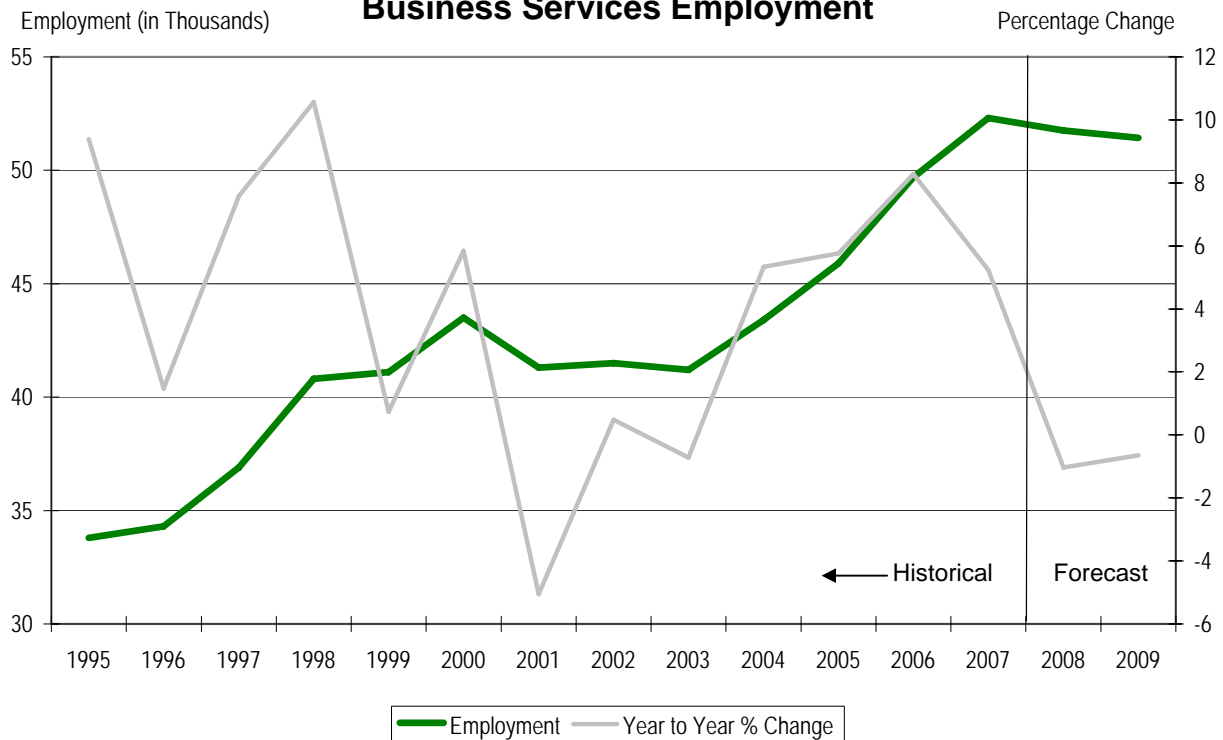
## Tucson MSA Information Employment



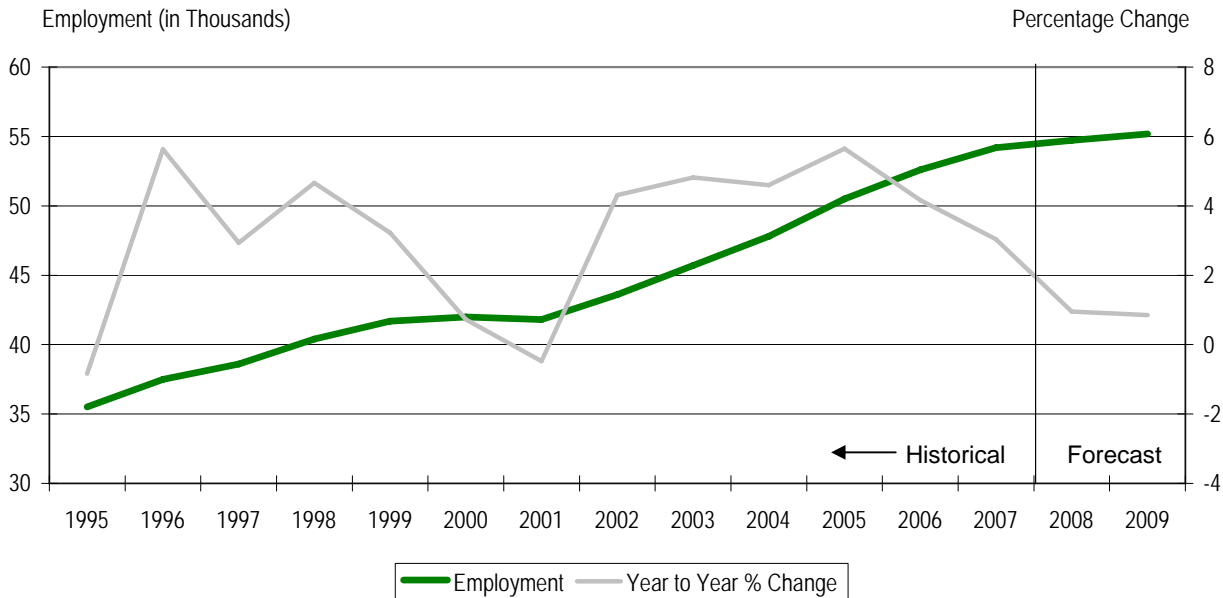
## Tucson MSA Financial Activities Employment



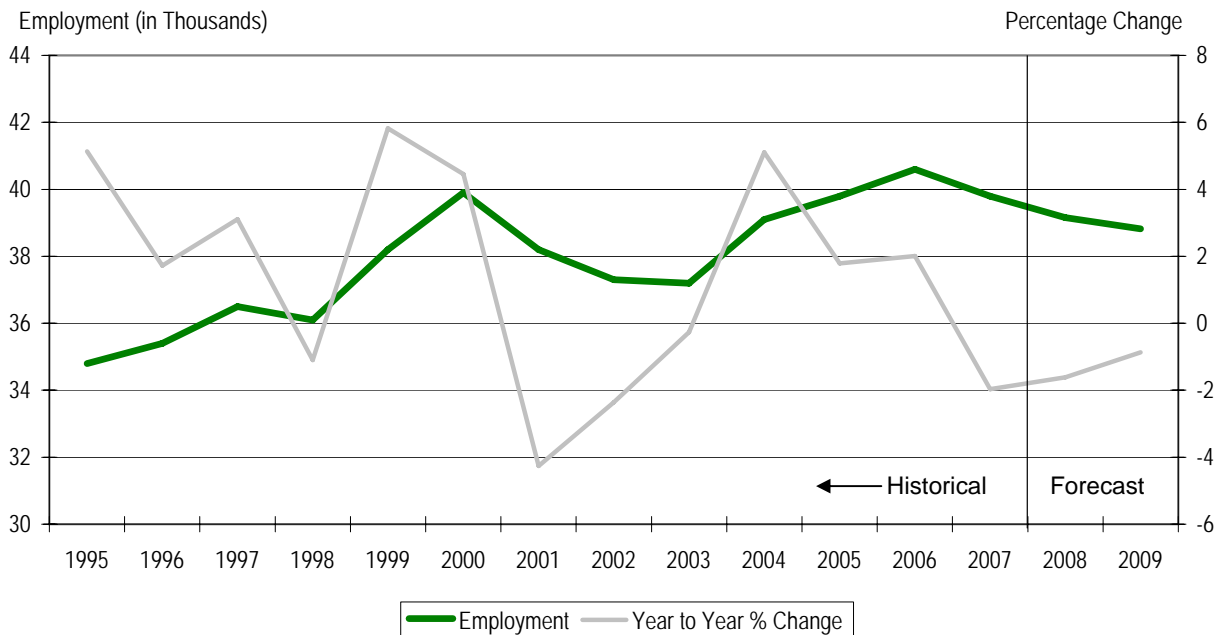
## Tucson MSA Professional & Business Services Employment



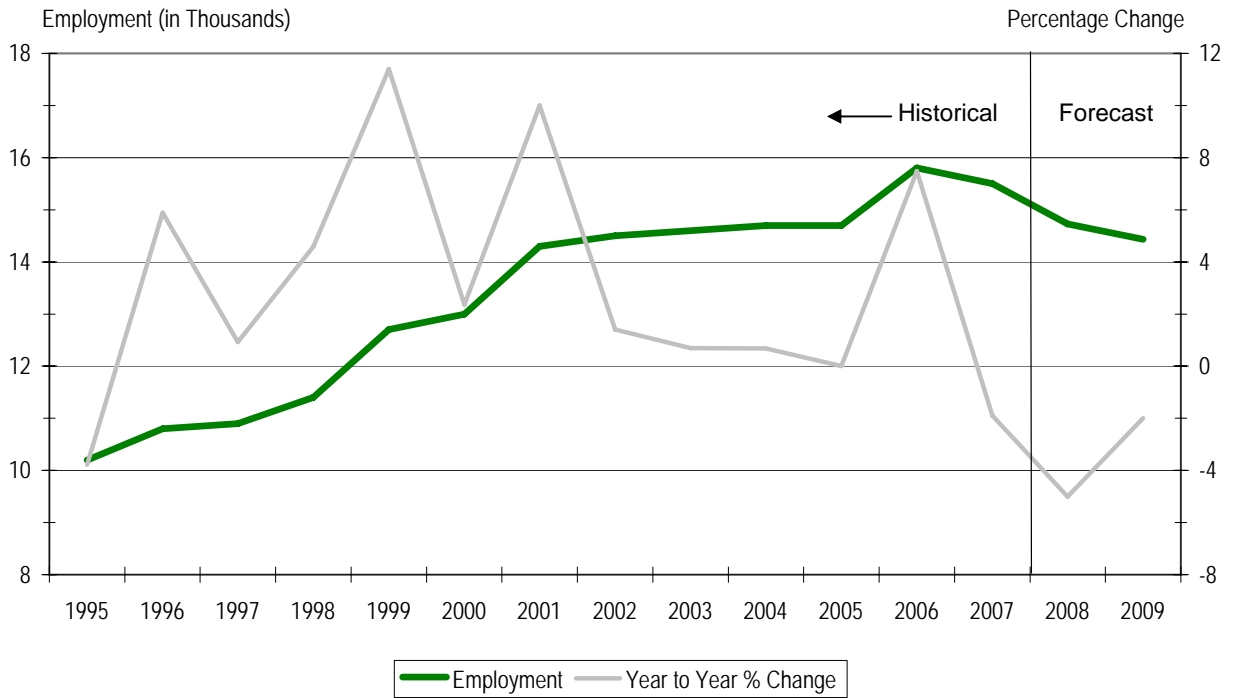
## Tucson MSA Education & Health Services Employment



## Tucson MSA Leisure & Hospitality Employment



## Tucson Other Services Employment



## Tucson Government Employment

